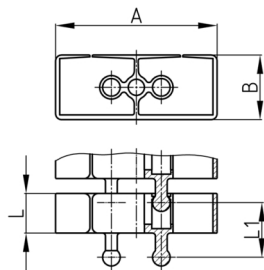


Product Group KBKFLIISB

Rectangular cable chain set for cable feed to writing and working tables, incl. base plate and table mounting

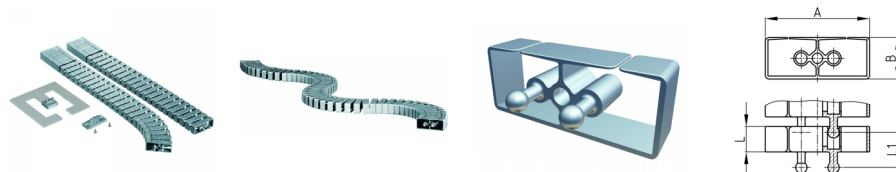


Standard Colours

- black
- white
- uncoloured-translucent
- silver

Material

- Plastic parts: Polypropylene (PP)
- Base: powder coated steel



Product information

- Flexible cable ducting system for horizontal and vertical cable ducting.
- Using different fixing elements arbitrarily assembled.

•

The chain links arranged displaceable to each other.

- 2 connectors for optimal force transmission, especially torque, pressure- and transverse forces
- Two-chamber-system for separating data and power lines
- For less frequented passage areas sufficiently resistant.
- Tool-free connection to all traded floor outlets by using "KBKZ10S / Clip-S Floor (CL+ FLII)".
- Tool-free branching through distributors
- Optimized possibility for lateral squeeze-proof unthreading of the cables.
- 3-D movable and approx. 25 % lengthwise flexible
- Compatible with "KBKCUB", "KBKCMX", KBKPRO", "KBKCL" und "KBKFLII" (intermateable).
- Compatible with KBK Bridge
- Extensive range of adapters
- Complete packing in one box (assembled cable elements with desk fixing, base plate and screw set)

Order Number	A	B	L	L1	Element(s)	For up to x cable
	mm	mm	mm	mm	piece(s)	piece(s)
KBKFLII SET-B 75 cm	55	22	14	19	38	20
KBKFLII SET-B 125 cm	55	22	14	19	65	20